



INSTALLATION GUIDE

TESSA FOR ADOBE PHOTOSHOP

REQUIRED SOFTWARE

Anastasiy's Extension Manager

Anastasiy's Extension Manager is a cross-platform application (OS X and Windows) that makes installing extensions, plug-ins, and panels in Adobe Creative Suite and Creative Cloud a simple matter.

For more information and a download link for Windows and Mac, visit:
<https://install.anastasiy.com>

TESSA Connect for Photoshop CC (Plug-In)

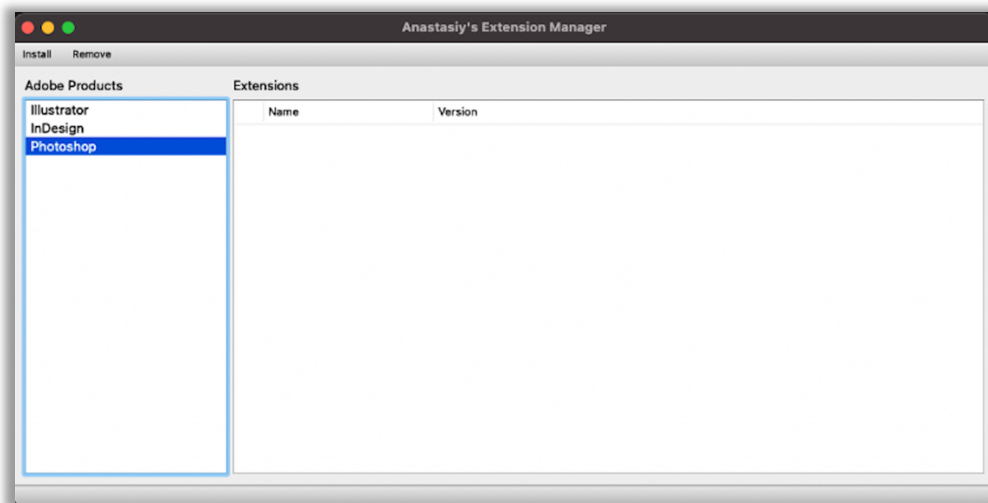
This extension is provided as a ZXP file and can be installed via "Anastasiy's Extension Manager". After installation, the extension is available in Photoshop and allows you direct access to all assets stored in your TESSA. You can search, open, save, version and edit all assets from your Tessa directly in Photoshop. More information about the extension can be found at: <https://www.tessa-dam.com>

Your TESSA partner can provide you with the Photoshop extension as a ZXP file. Alternatively, you can contact the manufacturer directly by sending an email to info@tessa-dam.com.

INSTALLATION

Step 1: Installation Anastasiy's Extension Manager

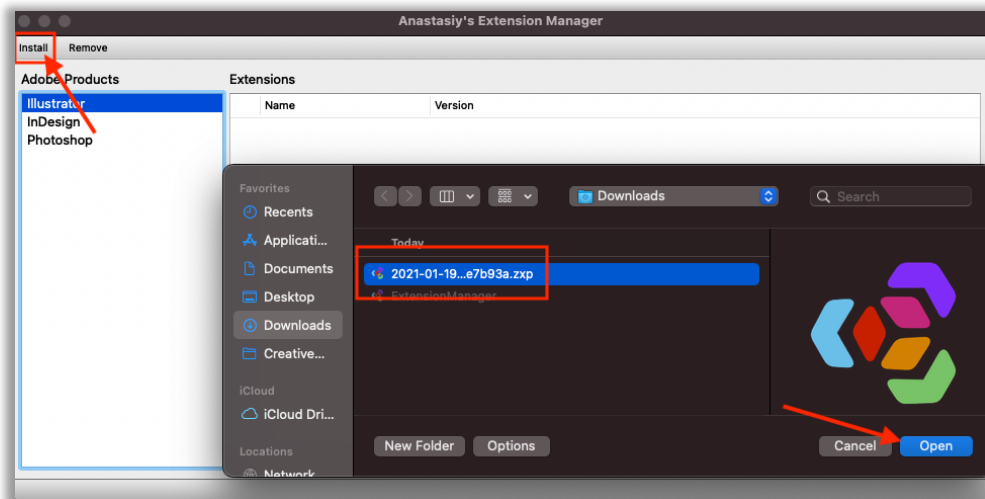
Download the Extension Manager from the manufacturer's website <https://install.anastasiy.com/> and install it on your computer. Admin rights may be required for this. After the installation you open the program with a double-click on the corresponding icon



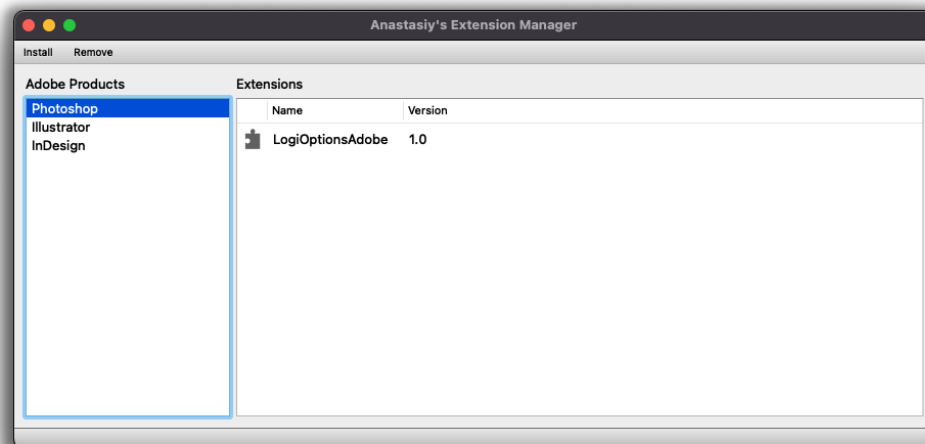
(Screenshot: Anastasiy's Extension Manager interface)

Step 2: Installing the extension

Install the Photoshop extension by opening the corresponding ZXP file in Anastasiy's extension manager. To do this, click on the "Install" tab and select the appropriate file and open it.



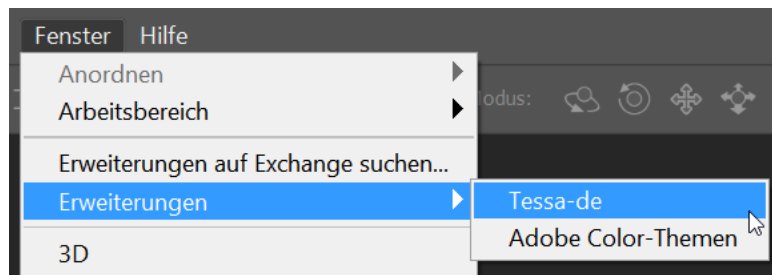
(Screenshot: Installation process)



(Screenshot: Successfully completed installation process)

Step 3: Configuration of the extension

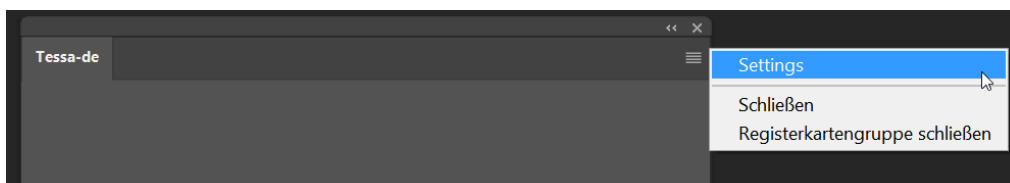
After the successful installation Photoshop has to be restarted to load the extension correctly. You will now find the entry "Tessa" under the menu item "Window -> Extensions" to open the extension.



(Screenshot: Open TESSA-Connector)

After the TESSA connector has been opened in Photoshop, it still needs to be connected to TESSA DAM. This process is only necessary once directly after installation and does not need to be repeated.

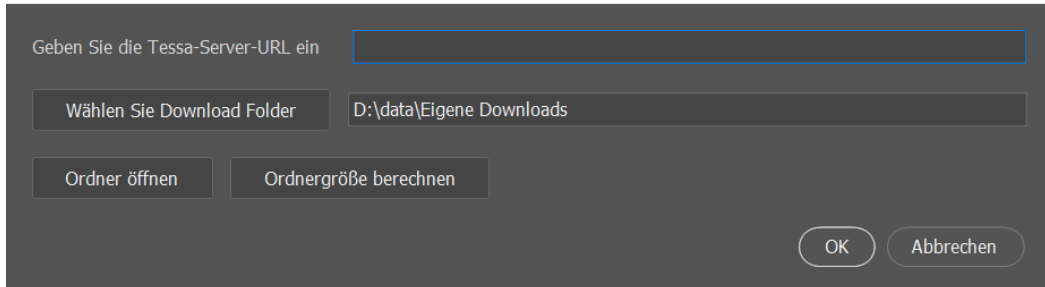
To do this, open the Settings dialog by clicking on the corresponding icon in the upper right corner of the TESSA panel.



(Screenshot: Opening the Settings dialog)

In the settings dialog you have to enter the URL to your TESSA and a local directory for temporary files. You can get the URL to your TESSA from your responsible TESSA partner. As a local directory it is recommended to select a separate directory on your local hard disk with correspondingly large storage space.

Einstellungen

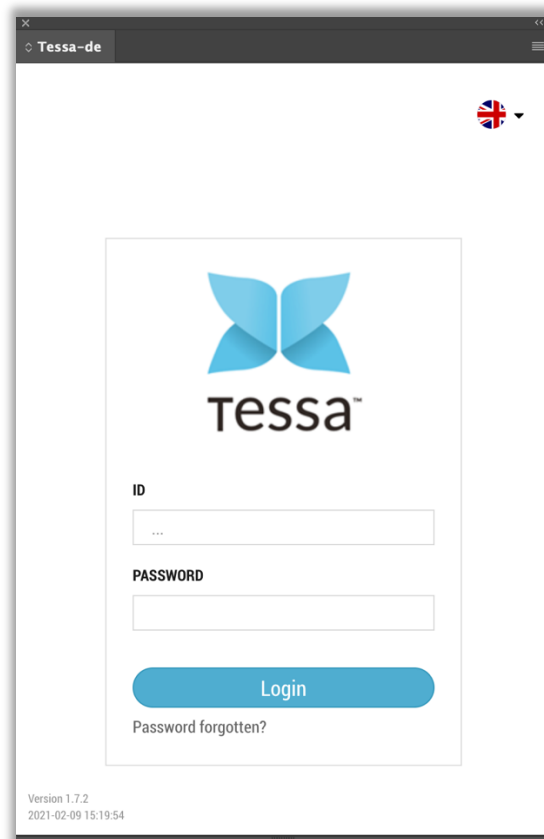


The screenshot shows a settings dialog box with a dark gray background. At the top, it says "Geben Sie die Tessa-Server-URL ein" followed by a text input field. Below this, there is a button labeled "Wählen Sie Download Folder" and a text field containing "D:\data\Eigene Downloads". Underneath these are two buttons: "Ordner öffnen" and "Ordnergröße berechnen". In the bottom right corner, there are two buttons: "OK" and "Abbrechen".

(Screenshot: The Settings dialog)

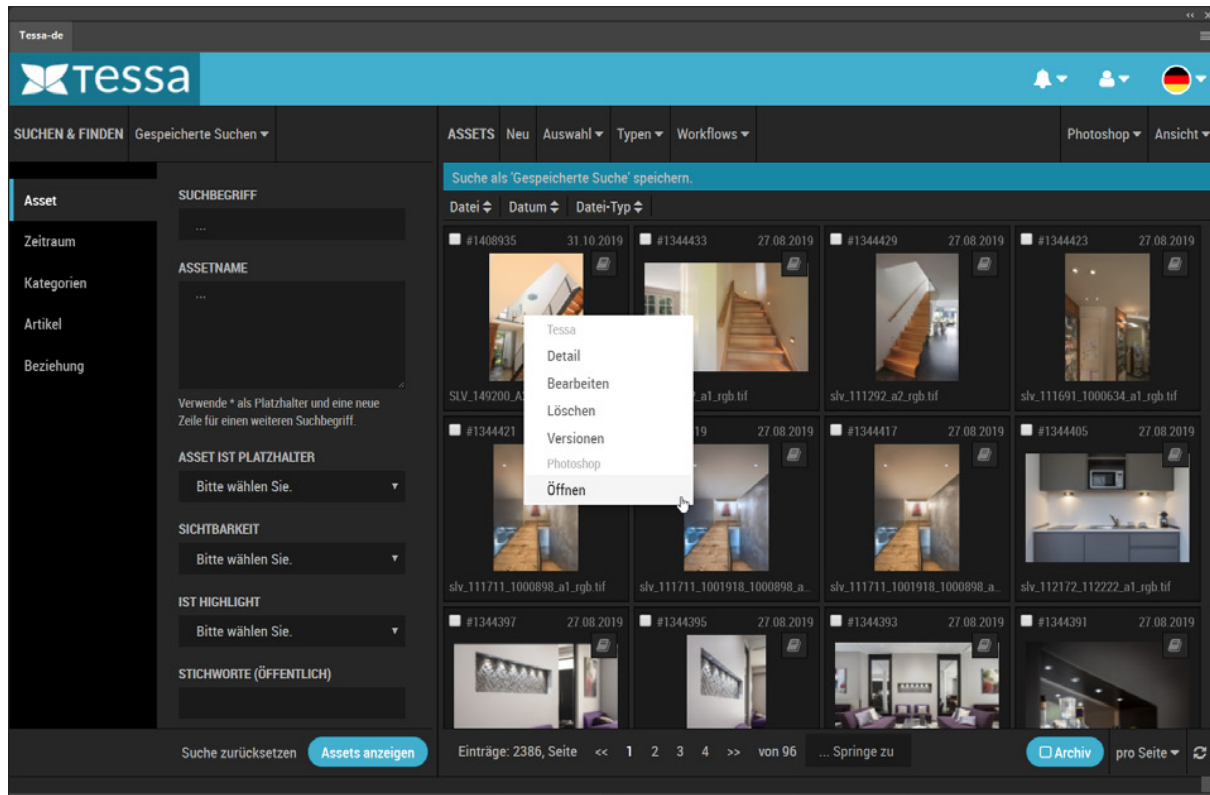
Step 4: TESSA registration

After all the settings have been made, you can log in to your TESSA directly in Photoshop. To do this, you use the same credentials that you use to log in via the web browser.



(Screenshot: Login TESSA in Photoshop)

You now have several new features for working with TESSA in Photoshop.



(Screenshot: TESSA editing dialog in Photoshop)