



Tessa

# TESSA Connect for Illustrator CC

## Installation Guide

Status 04/19/2021

## 1. Required Software

---

### Anastasiy's Extension Manager

Anastasiy's Extension Manager is a cross-platform application (OS X and Windows) that makes installing extensions, plug-ins, and panels in Adobe Creative Suite and Creative Cloud a simple matter.

For more information and a download link for Windows and Mac, visit <https://install.anastasiy.com/>.

### TESSA Connect for Illustrator CC (PlugIn)

This extension is provided as a ZXP file and can be installed via "Anastasiy's Extension Manager". After installation, the extension is available in Illustrator and allows you direct access to all assets stored in your Tessa. You can search, open, save, version and edit all assets from your Tessa directly in Illustrator.

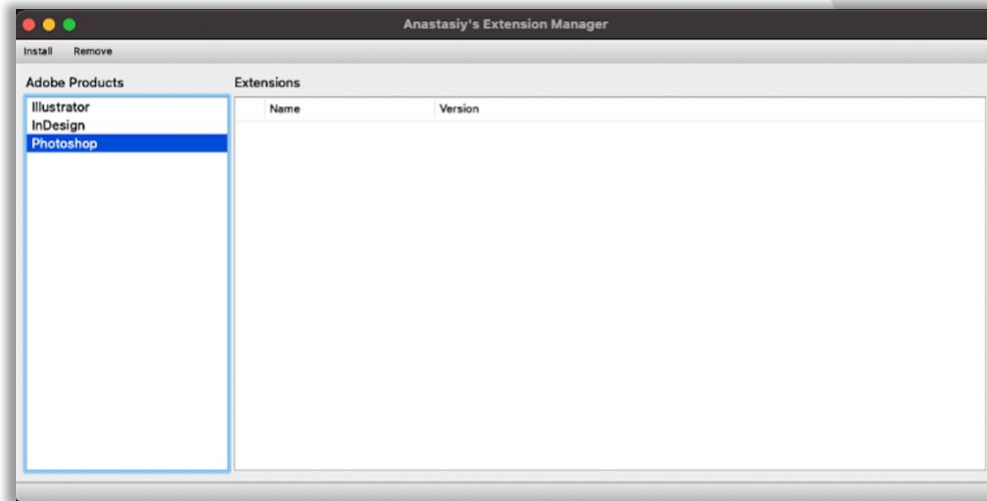
You can find more information on the Internet at <https://www.tessa-dam.com>.

Your Tessa partner can provide you with the Illustrator extension as a ZXP file. Alternatively, you can contact the manufacturer directly by sending an e-mail to [info@tessa-dam.com](mailto:info@tessa-dam.com).

## 2. Installation (Mac OS X)

### Step 1: Install Anastasiy's Extension Manager

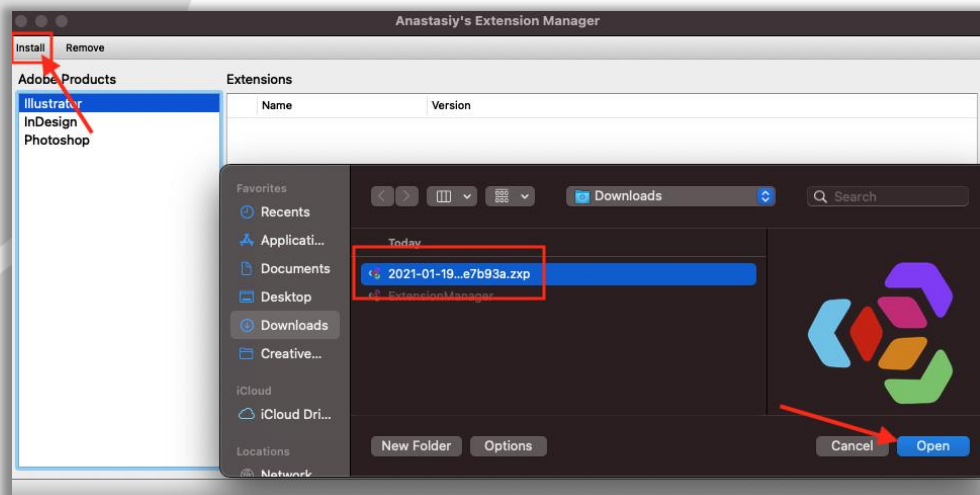
Download the Extension Manager from the manufacturer's website <https://install.anastasiy.com/> and install it on your computer. Admin rights may be required for this. After the installation you open the program with a double-click on the corresponding icon.



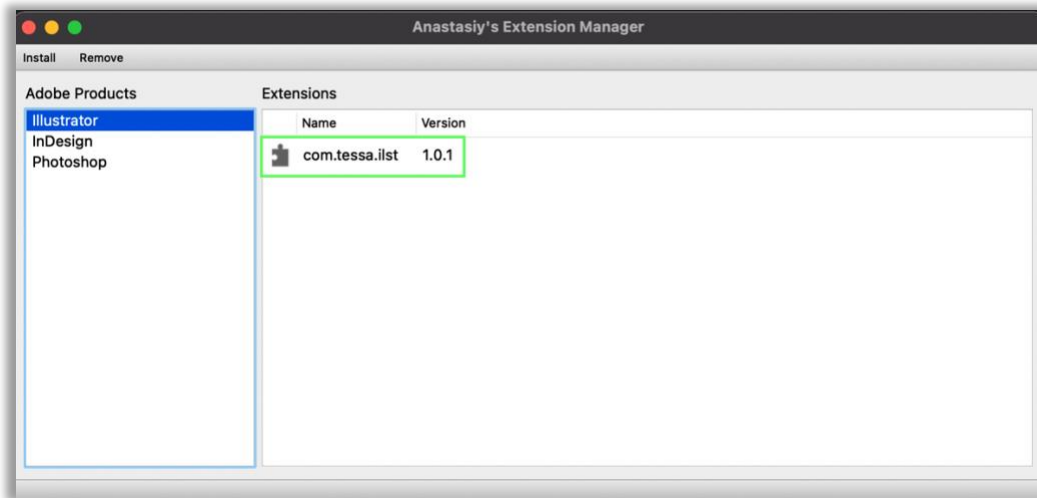
(Screenshot: Anastasiy's Extension Manager interface)

### Step 2: Installation the Extension

Install the Illustrator Extension by opening the corresponding ZXP file in Anastasiy's Extension Manager. To do this, click on the "Install" tab, select the appropriate file and open it.



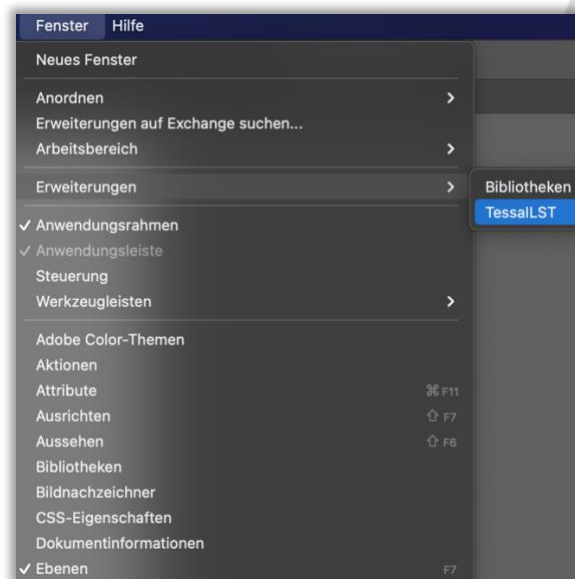
(Screenshot: Installation)



(Screenshot: Successfully completed installation process)

### Step 3: Extension configuration

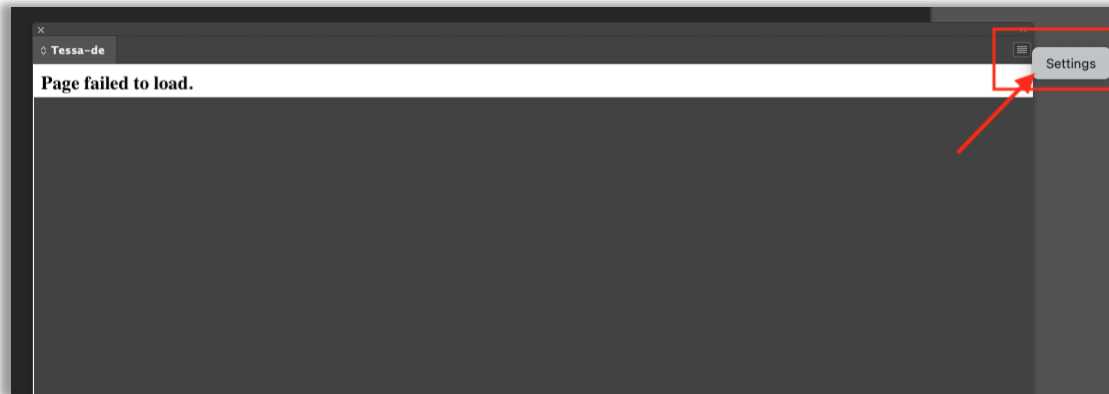
After the successful installation, Illustrator must be (re)started to load the extension correctly. You will now find the entry "TessaLST" under the menu item "Window -> Extensions" to open the extension.



(Screenshot: Open the Tessa-Connector)

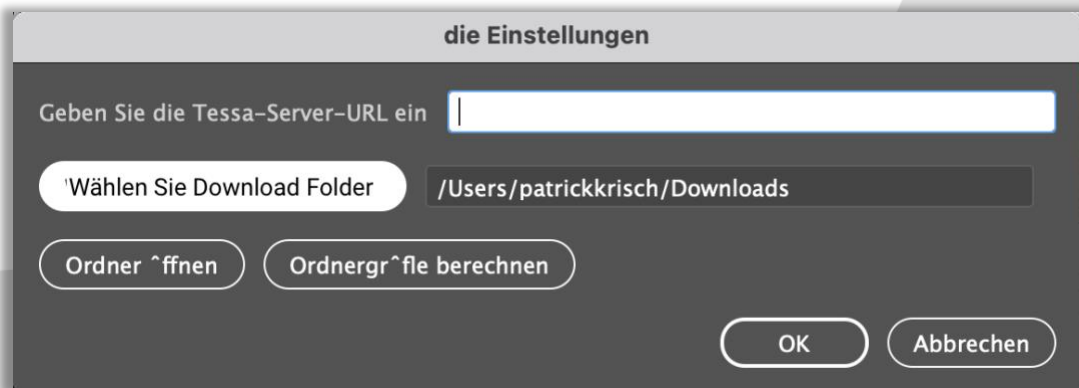
After the Tessa Connector has been opened in Illustrator, it must still be connected to Tessa. This process is only necessary once directly after the installation and does not have to be repeated.

To do this, open the Settings dialog by clicking on the corresponding icon in the upper right corner of the Tessa panel.



(Screenshot: Open the Settings-Dialog)

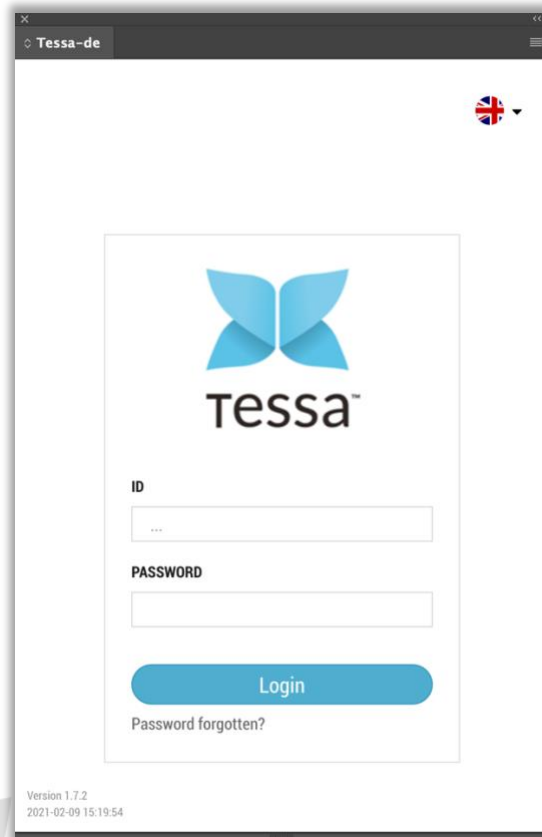
In the settings dialog you have to enter the URL to your Tessa and a local directory for temporary files. You can get the URL to your Tessa from your responsible Tessa partner. As a local directory it is recommended to select a separate directory on your local hard disk with a correspondingly large storage space.



(Screenshot: The Settings-Dialog)

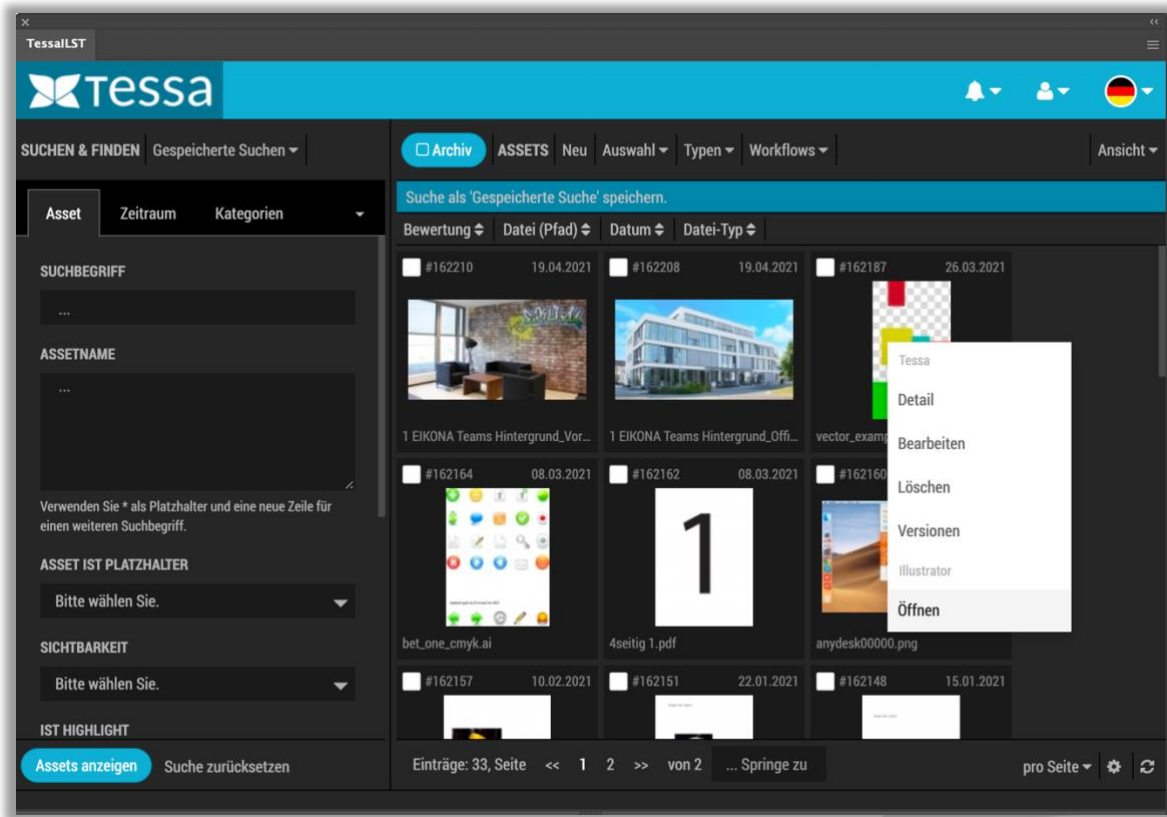
## Step 4: Login in Tessa

After all settings have been made, you can log in to your Tessa directly in Illustrator. To do this, you use the same credentials that you use to log in via the web browser.



(Screenshot: Login TESSA in Illustrator)

There are now some new functions available for working with Tessa in Illustrator.



(Screenshot: TESSA editing dialog in Illustrator)